

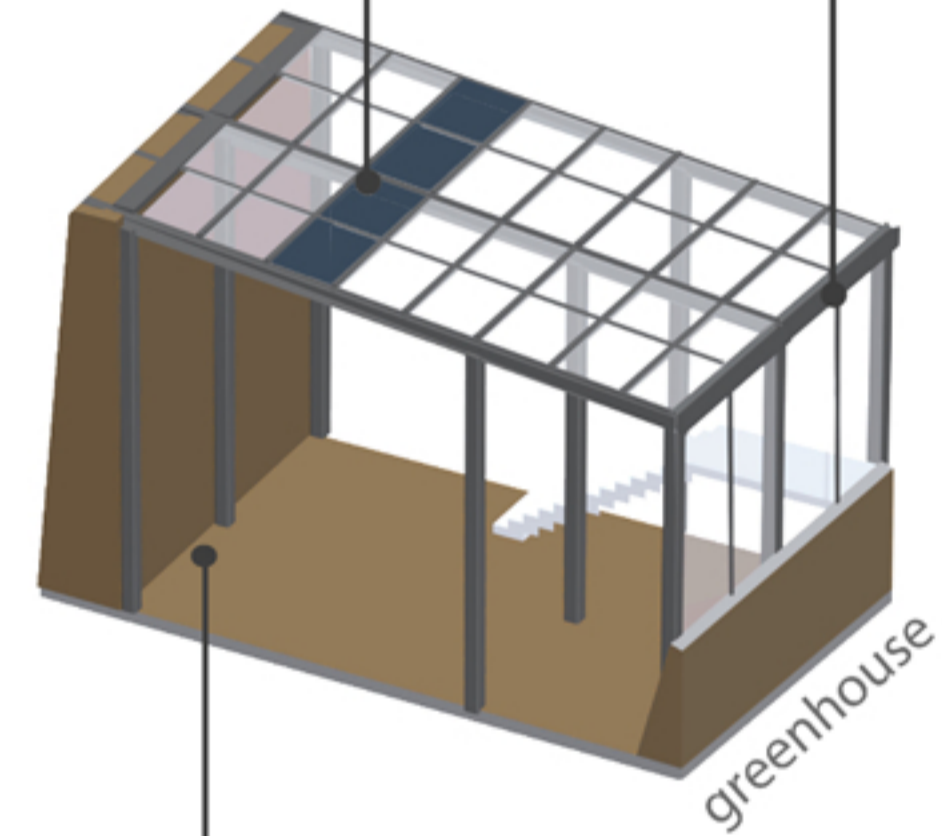
SOLAR PANELS
to provide the
energy for the
greenhouses
and the house

RAINWATER
COLLECTORS
to not let
Milanese rain
to waste

GREEN ROOF as
more private
green area for
the inhabitants

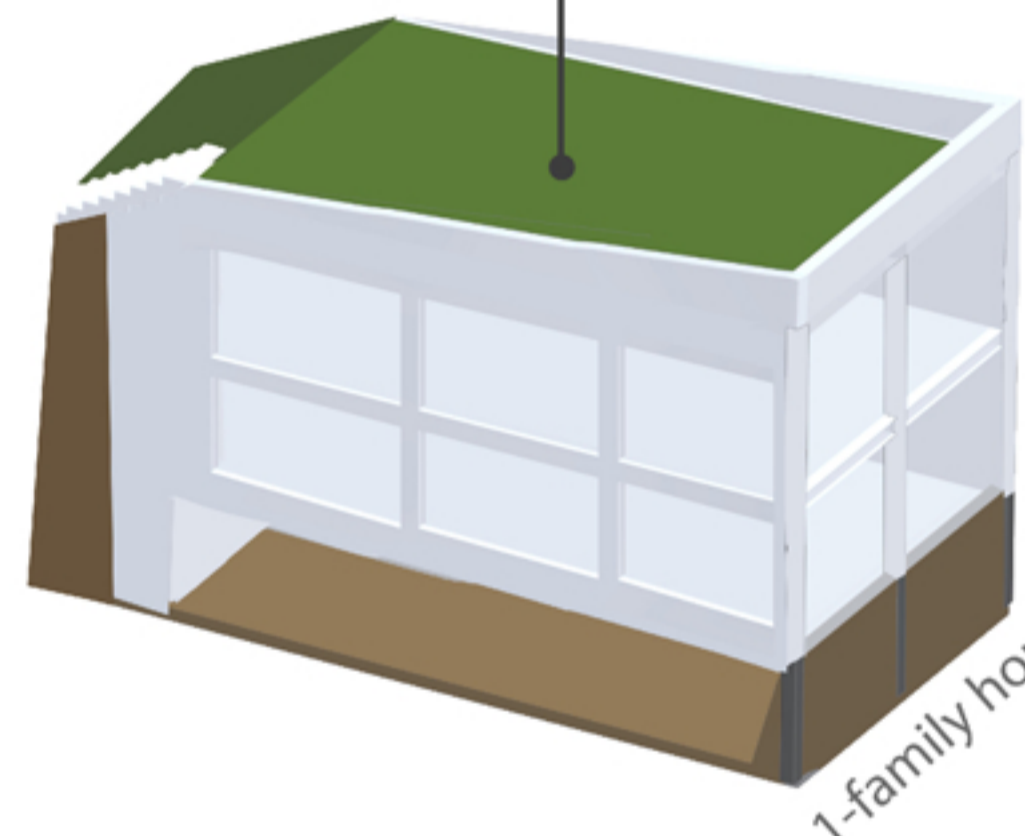
COMMUNICATION
between different
levels of paths:
stairs and ramps

BIKE PATH
on the upper level
in the back
of greenhouses



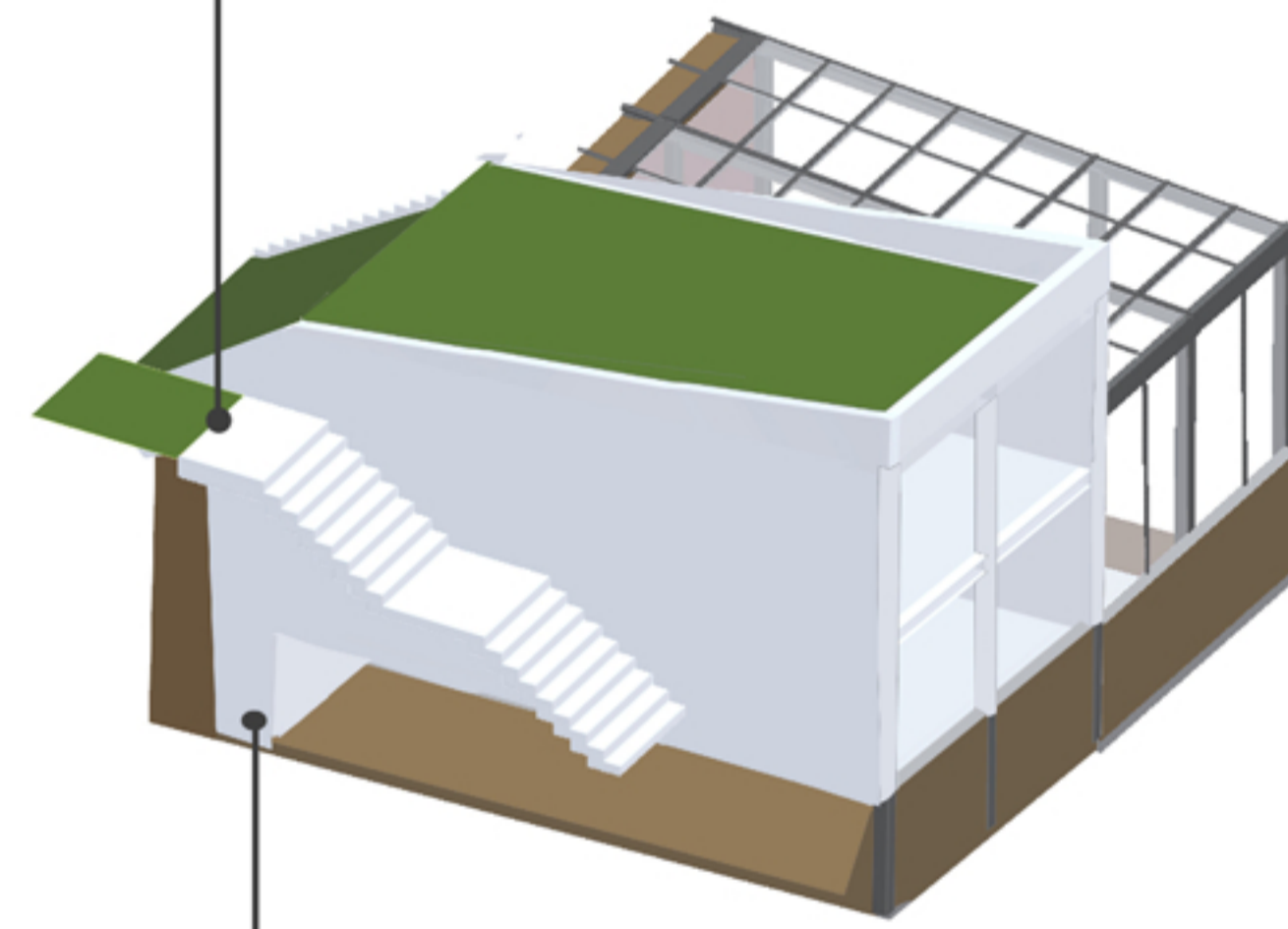
greenhouse

+

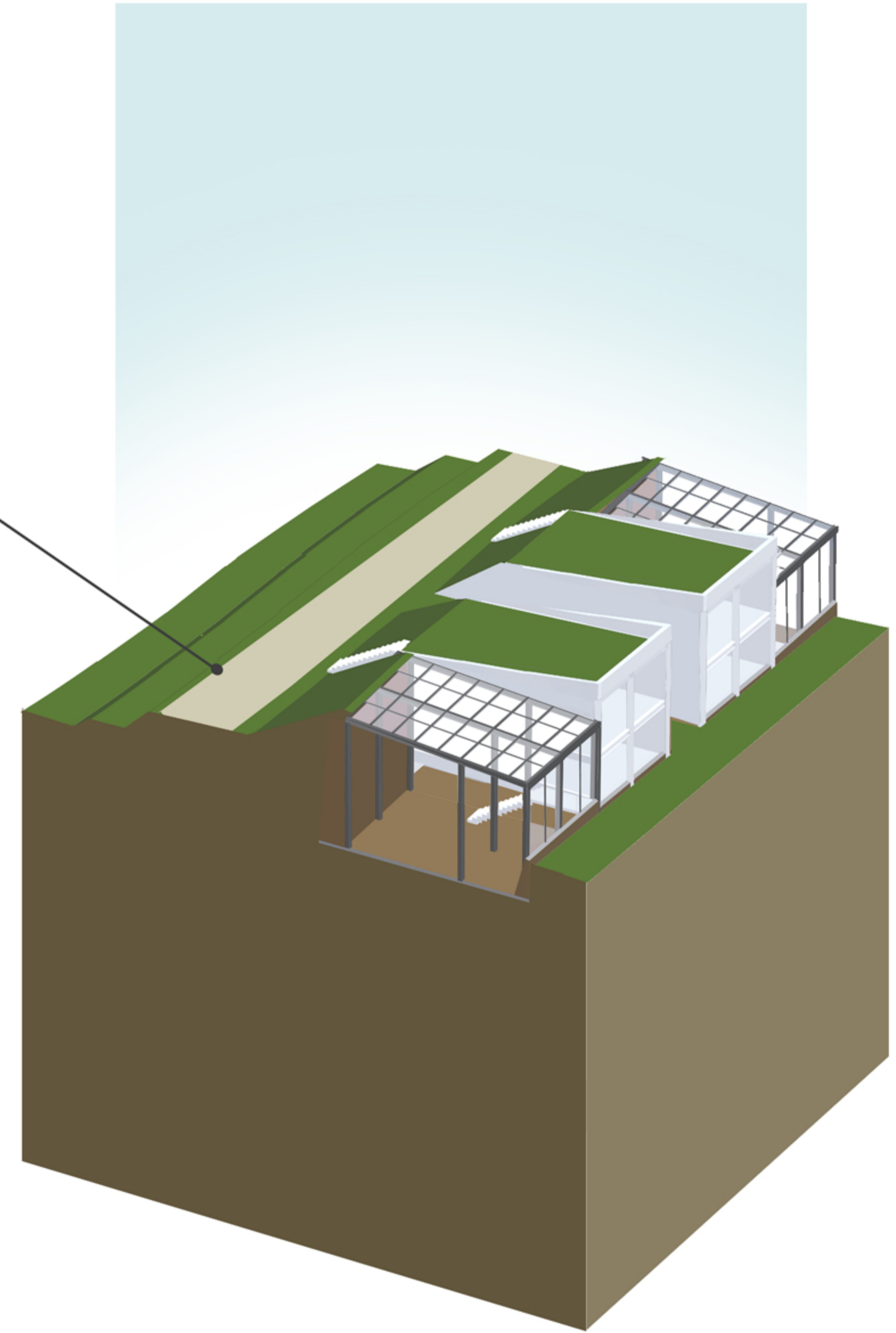


1-family house

+



=



RAMMED EARTH
as a part of
construction,
and as a thermal
mass

GROWING FOOD
in greenhouses
elongates the
vegetation period
during the year

PIT GREEN-
HOUSE saves
energy thanks
to thermal
mass

GEOHERMAL
PUMP provides
heating/cooling
energy for the
house

FOOD
SURPLUSES
can be stored,
processed
and/or sold

CONCEPTS AND FEWS TECHNOLOGY IN ONE UNIT

greenhouse x 2
house x 2